

Market Commentary

Overnight global action:

On 19th June 2026, US market delivered a positive performance with S&P500 up by +80.48 pts (1.08%), Dow Jones up by +72.15 pts (0.14%) and Nasdaq up by +735.25 pts (2.48%). Gift Nifty declined by -102.5 pts (-0.42%) indicating Indian markets will open negatively.

Advance-Decline ratio on NSE was 1760:1522 and on BSE was 2110:2138 which showed balance in the overall markets.

Index Options Data Analysis:

Sensex max call OI and put OI both are at 77000 with PCR of 0.82

Nifty max call OI and put OI both are at 24000 with PCR of 0.77

Bank Nifty max call OI and put OI both are at 58000 with PCR of 1.07

Securities in Ban for F&O Trade:

KAYNES

Sector Performance:

NIFTY AUTO index declined by -0.61% driven by Mahindra & Mahindra Ltd. (-2%) and Tata Motors Passenger Vehicles Ltd. (-1.97%)

NIFTY FMCG index declined by -0.19% driven by Colgate-Palmolive (India) Ltd. (-1.5%) and Dabur India Ltd. (-1.46%)

NIFTY REALTY index declined by -1.01% driven by Aditya Birla Real Estate Ltd. (-3%) and DLF Ltd. (-3.04%)

NIFTY OIL & GAS index declined by -1.18% driven by Bharat Petroleum Corporation Ltd. (-3.1%) and Hindustan Petroleum Corporation Ltd. (-

NIFTY CHEMICALS Index grew by 0.69% driven by Himadri Speciality Chemical Ltd. (+6.7%) and Coromandel International Ltd. (+1.92%)

NIFTY PSU BANK index declined by -0.62% driven by Canara Bank (-0.9%) and Central Bank Of India (-0.91%)

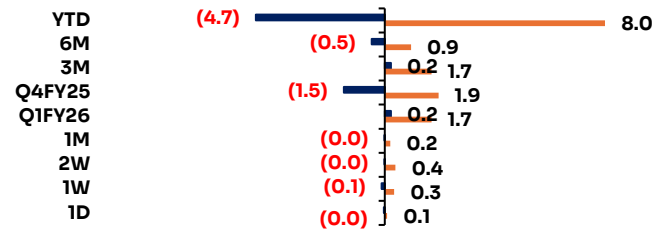
NIFTY CONSUMER DURABLES index declined by -0.39% driven by Bata India Ltd. (-5.3%) and Blue Star Ltd. (-5.34%)

Now listen to the daily market update



Fund Flow	Buy	Sell	Net
FII/FPI	31,443	26,584	4,859
DII	18,020	19,180	-1,160

■ Net FII (in INR Lakh Cr) ■ Net DII (in INR Lakh Cr)



Indian Indices	CMP	1D	YTD	P/E x
Gift Nifty	24,090	-0.4%	-8.3%	21.8
Sensex 30	76,803	-0.8%	-9.9%	20.1
Nifty 50	24,013	-0.6%	-8.1%	21.8
India VIX	13	2.4%	36.9%	
Nifty Bank	57,686	-0.5%	-3.2%	17.0
Nifty Next 50	72,357	-0.3%	4.3%	72.4
Nifty 500	23,144	-0.3%	-3.1%	21.7
Nifty Mid 100	62,517	0.2%	3.4%	32.2
Nifty Small 250	17,714	0.6%	6.2%	29.8
USD/INR	94	0.0%	5.0%	
India 10Y	6.9%			
India 2Y	6.1%			
India 1Y	5.7%			
Bank Rate	5.8%			

Global Indices	CMP	1D	YTD	P/E x
S&P 500	7,501	1.1%	9.6%	32.5
Dow Jones	51,565	0.1%	7.3%	24.9
Nasdaq 100	30,406	2.5%	20.4%	49.9
FTSE 100	10,363	-0.4%	4.4%	16.3
CAC 40	8,421	-0.6%	3.3%	24.7
DAX	24,986	-0.2%	2.0%	26.1
Nikkei 225	71,250	0.3%	41.5%	38.0
Hang Seng	23,925	-1.6%	-6.7%	11.6
Shanghai Cor	4,090	-0.4%	3.1%	18.5
KOSPI	9,052	-0.1%	114.8%	44.8
S&P/ASX 200	8,829	-0.9%	1.3%	23.3

Stocks in the News

BROOKS LABORATORIES LTD. (CMP: 67, MARKET CAP: 198 Cr., SECTOR: PHARMACEUTICALS & DRUGS)

The pharmaceutical formulation specialist announced a major capital restructuring program following a comprehensive board evaluation. The company executed a revised disclosure for the partial monetization of its equity holding in Brooks Steriscience Limited, approving the divestment of 51,220 equity shares at a cash consideration of ₹20,760 per share, totaling an institutional capital inflow of ₹106.33 crore. The fresh proceeds are earmarked for capacity expansions and immediate working capital optimization. [BSE Corporate Disclosures](#)

MAGELLANIC CLOUD LTD. (CMP: 29, MARKET CAP: 1722 Cr., SECTOR: IT - SOFTWARE)

The software development and IT consulting enterprise issued an official exchange communication addressing unusual volume and price spikes observed across its primary equity counters. Compliance officers formally clarified under SEBI Regulation 30 that all material corporate events remain fully public and no unpublished price-sensitive parameters are currently withheld. Trade analytics indicate that recent price expansions are entirely market-driven, supported by structural delivery volumes. [NSE India Exchange Tracker](#)

LARSEN AND TOUBRO LTD. (CMP: 4210, MARKET CAP: 579127 Cr., SECTOR: ENGINEERING - CONSTRUCTION)

The engineering and infrastructure conglomerate finalized the structural incorporation of a wholly-owned step-down subsidiary to spearhead targeted heavy technology developments. Administrative teams completed the official exchange documentation to align the new structural entity with broader corporate operational guidelines under SEBI Listing Obligations and Disclosure Requirements. [BSE Corporate Disclosures](#)

UTKARSH SMALL FINANCE BANK LTD. (CMP: 15, MARKET CAP: 2632 Cr., SECTOR: BANK - PRIVATE)

The banking institution executed a comprehensive board re-alignment sequence following the formal conclusion of its weekend leadership council. The outcome of the meeting confirmed structural changes in the directorate framework along with immediate modifications to specialized regulatory oversight committees. Financial tracking counters anticipate that these strategic administrative revisions will help maintain tight underwriting standards and support optimized cost-of-funds structures. [BSE Corporate Disclosures](#)

Sectoral Inde	CMP	1D	YTD	P/E x
Nifty Auto	26,583	-0.6%	-5.7%	21.9
Nifty IT	27,427	-3.7%	-27.6%	21.4
Nifty Fin Ser	26,431	-0.6%	-4.3%	17.3
Nifty Pharma	24,460	0.7%	7.6%	40.2
Nifty Services	30,563	-0.8%	-9.2%	33.6
Nifty Cons Du	37,237	-0.4%	1.3%	50.5
Nifty PSE	10,179	-0.1%	3.3%	10.7
Nifty FMCG	49,559	-0.2%	-10.7%	34.1
Nifty Pvt Bank	27,892	-0.5%	-2.9%	10.4
Nifty PSU Banl	8,717	-0.6%	2.2%	14.3
Nifty Cons	11,622	0.1%	-5.4%	41.1
Nifty Realty	812	-1.0%	-7.5%	35.3
Nifty Infra	9,512	0.1%	-1.1%	22.1
Nifty Energy	40,548	0.2%	14.8%	12.9
Nifty Health	15,669	0.7%	7.0%	37.5
Nifty India Mfg	16,021	-0.1%	4.0%	29.8
Nifty Metal	13,021	0.1%	16.6%	23.3
Nifty Oil & Gas	11,170	-1.2%	-8.7%	17.1

Derivatives Position (Combined#)

Stock	% Chg OI	%Chg LTP
Long		
GVT&D	9.7	5.1
TRENT	8.0	0.5
MOTHERSON	0.0	0.7
BHARATFORG	0.7	6.0
BAJFINANCE	4.9	8.0
Short		
BRITANNIA	10.7	-0.9
ASIANPAINT	8.5	-1.4
SAIL	6.1	-2.8
PNBHOUSING	5.9	-1.1
KAYNES	4.6	0.0
Long Unwinding		
SAMMAANCAP	-5.0	-0.2
PGEL	-3.4	-0.1
MAXHEALTH	-2.9	-0.1
GMRAIRPORT	-2.5	-1.8
VOLTAS	-1.8	-0.8
Short Covering		
RADICO	-7.0	1.5
HDFCLIFE	-5.0	0.3
NTPC	-4.3	0.1
PREMIERENE	-4.2	3.2

PEARL GLOBAL INDUSTRIES LTD. (CMP: 1797, MARKET CAP: 8299 Cr., SECTOR: TEXTILE)

The readymade garment manufacturing exporter completed a major structural revision across its executive management tiers to optimize international distribution logistics. Compliance desks verified that the management changes were executed in full alignment with SEBI Regulation 30 guidelines to ensure transparency across public floats. Export research units estimate that this administrative optimization will streamline supply-chain efficiencies across North American and European retail pathways. The stock displays stable technical support near its long-term simple moving averages. [BSE Corporate Disclosures](#)

Commodity:	CMP	1D	YTD
Gold (\$)	4,173	-1.7%	0.3%
Silver (\$)	64.9	-2.1%	0.1%
Brent Oil (\$)	80.6	0.9%	-0.2%
WTI Oil (\$)	76.5	0.9%	-20.6%

Currency	CMP	1D	YTD
USD/INR	94.3	0.0%	0.0%
EUR/INR	108.2	0.1%	0.1%
GBP/INR	124.8	0.2%	0.1%
JPY/INR	0.6	0.0%	0.1%
EUR/USD	1.1	0.1%	0.1%

Securities Lending & Borrowing Scheme (SLBS)			
Company	Under.Ltp	Fut.Ltp	Spread (%)
KPITTECH	765	743.45	2.82
BAJAJ-AUTO	10,080.00	9,911.00	1.68
KAYNES	3,268.00	3,218.10	1.53
NAM-INDIA	1,187.00	1,170.00	1.43
BAJAJHLDNG	10,695.00	10,619.00	0.71

52 Week High

Stock	LTP	New 52W high	Prev 52W high	Prev 52W high date
GVT&D	5,485	5,632	5,264	18-Jun-26
ABCAPITAL	373	377	376	16-Jun-26
FEDERALBNK	324	325	324	18-Jun-26
ANGELONE	353	360	357	18-Jun-26
CRAFTSMAN	9,770	9,938	9,738	8-May-26

52 Week Low

Stock	LTP	New 52W low	Prev 52W low	Prev 52W low date
TCS	2,136	2,060	2,110	11-Jun-26
INFY	1,054	1,030	1,089	14-May-26
WIPRO	181	175	176	11-Jun-26
TATAELXSI	4,085	3,926	3,945	14-May-26
EIDPARRY	708	698	705	11-Jun-26

Volume Shockers

Stock	Vol (000)	1W avg vol (000)	2W avg vol (000)	LTP (INR)
ESENSEX	36	8	6	77
NEXT50BETA	4,158	895	644	79
LAMBODHARA	306	67	39	115
BHAGCHEM	4,419	977	574	280
BAJAJST	253	57	36	420
RML	2,086	474	245	1,125
MOIPO	32	7	4	47
AKSHARCHEM	106	25	16	249
ITADD	1,825	431	236	29
BERGEPAIN	7,790	1,840	1,113	556
SIKA	1,024	242	126	1,100
ENIFTY	122	29	92	24
PANAMAPET	10,474	2,521	2,844	490
PVTBANKADD	12,655	3,050	1,650	28
IRIS	703	170	96	273
ICRA	94	23	14	5,315
TARIL	41,818	10,497	5,973	358
SREEL	92	23	13	215
RBA	77,848	19,784	11,197	74
RELTD	8,980	2,283	1,473	168
NACLIND	8,784	2,236	1,468	194
TVSHLTD	28	7	5	13,239
JINDWORLD	15,617	4,052	4,757	33
VENUSPIPES	616	163	102	1,550

Bulk Deals

Security Name	Client Name	Buy / Sell	Qty (in 000)	Price (in 000)
AEROENTER	A And S Tradelink	SELL	603	133.9
AGIIL	Arihant Capital Markets Limited	SELL	1216	369.4
AGIIL	Arihant Capital Markets Limited	BUY	1241	368.9
ALLCARGO	Vanguard Emerging Markets Stock Index Fund A Series O	SELL	8461	8.7
ALLCARGO	Vanguard Total International Stock Index Fund	SELL	8934	8.7
AMBER	Graviton Research Capital Llp	BUY	241	7,957.9
AQYLON	Pine Oak Global Fund	BUY	1400	48.4
ATALREAL	Altizen Ventures Llp	SELL	175	30.7
ATALREAL	Altizen Ventures Llp	BUY	1228	30.5
BIOPOL	Alacrity Securities Ltd	BUY	74	95.6
ESSENTIA	Gi Engineering Solutions Limited	BUY	9000	1.4
EXICOM	Hrti Private Limited	BUY	666	172.4
EXICOM	Hrti Private Limited	SELL	696	171.8
EXIMROUTES	Allina Qureshi	BUY	200	111.0
EXIMROUTES	Expertpro Realty Private Limited	SELL	200	111.0
FALCONTECH	Shrishti Agrawal	BUY	13	11.9
FALCONTECH	Shrishti Agrawal	SELL	48	11.3
GNA	Seehra Maninder Singh	SELL	727	433.4
GOKEX	Sbi Life Insurance Company Ltd	BUY	400	814.8
IRIS	Tunga India Long Term Equity Fund	SELL	178	276.1
KRISHPP	Talisman Securities Private Limited	BUY	30	140.5
LAMOSAIC	Vishal Mahesh Waghela	SELL	91	36.1
MADHUSUDAN	Vspartans Consultants Private Limited	BUY	100	172.4
MAGSON	Albula Investment Fund Ltd	SELL	150	160.0
MAGSON	Rising Corporation Llp	BUY	150	160.0
MARKOLINES	Vistaar Trading Service Private Limited	BUY	123	170.1
MARKOLINES	Vistaar Trading Service Private Limited	SELL	123	170.3
MCLOUD	Dipti Jitesh Parmar	SELL	3589	31.6
MCLOUD	Hrti Private Limited	SELL	4130	32.1
MCLOUD	Hrti Private Limited	BUY	4464	31.5
MCLOUD	Junomoneta Finsol Private Limited	SELL	4202	32.0
MCLOUD	Junomoneta Finsol Private Limited	BUY	4218	31.9
MCLOUD	Qe Securities Llp	SELL	3334	32.2
MCLOUD	Qe Securities Llp	BUY	3418	31.9
MOTISONS	Arihant Capital Markets Limited	BUY	4674	14.3
MOTISONS	Arihant Capital Markets Limited	SELL	5744	14.3
MOTISONS	Hrti Private Limited	SELL	5129	14.4
MOTISONS	Hrti Private Limited	BUY	5745	14.4
MPEL	Gohil Sarvesh Atulkumar	SELL	51	42.0
MUNISH	Mala	BUY	187	65.0
MUNISH	Rgsi Investment Lvf 1	SELL	202	66.1
NAGREEKCAP	Veer Singh Thakur	SELL	85	26.4
NELCO	Doshi Hitesh Satish	SELL	115	960.8
NELCO	Irage Broking Services Llp	SELL	106	945.0

Security Name	Client Name	Buy / Sell	Qty (in 000)	Price
NELCO	Irage Broking Services Llp	BUY	145	948.5
NELCO	Jump Trading Financial India Private Limited	SELL	135	947.8
NELCO	Jump Trading Financial India Private Limited	BUY	135	948.0
NELCO	Junomoneta Finsol Private Limited	SELL	282	942.5
NELCO	Junomoneta Finsol Private Limited	BUY	284	941.9
NELCO	Microcurves Trading Private Limited	BUY	387	948.2
NELCO	Microcurves Trading Private Limited	SELL	387	948.2
NELCO	Nk Securities Research Private Limited	SELL	228	945.2
NELCO	Nk Securities Research Private Limited	BUY	228	944.7
NELCO	Puma Securities	BUY	118	946.6
NELCO	Puma Securities	SELL	118	946.8
NELCO	Qe Securities Llp	BUY	197	934.3
NELCO	Qe Securities Llp	SELL	200	929.5
ONYX	Fateh Pal Singh	SELL	1340	35.1
ONYX	Gautam Bhardwaj	BUY	440	35.0
ONYX	Kanhaiya Bhardwaj	BUY	682	35.0
ONYX	Kunal Bhardwaj	BUY	1000	34.1
ONYX	Sanjay Jain	SELL	1000	34.1
PANAMAPET	Junomoneta Finsol Private Limited	SELL	358	468.0
PANAMAPET	Junomoneta Finsol Private Limited	BUY	359	467.6
PANAMAPET	Microcurves Trading Private Limited	BUY	495	467.8
PANAMAPET	Microcurves Trading Private Limited	SELL	495	468.3
PANAMAPET	Qe Securities Llp	BUY	414	464.9
PANAMAPET	Qe Securities Llp	SELL	414	466.0
PARAS	Hrti Private Limited	SELL	833	1,395.6
PARAS	Hrti Private Limited	BUY	885	1,394.1
PARAS	Jump Trading Financial India Private Limited	BUY	755	1,392.8
PARAS	Jump Trading Financial India Private Limited	SELL	755	1,395.4
PARAS	Junomoneta Finsol Private Limited	SELL	986	1,393.2
PARAS	Junomoneta Finsol Private Limited	BUY	990	1,392.5
PARAS	Microcurves Trading Private Limited	SELL	729	1,397.6
PARAS	Microcurves Trading Private Limited	BUY	729	1,396.7
PARAS	Nk Securities Research Private Limited	BUY	476	1,392.0
PARAS	Nk Securities Research Private Limited	SELL	476	1,392.6
PARAS	Qe Securities Llp	SELL	404	1,390.3
PARAS	Qe Securities Llp	BUY	410	1,382.3
PINELABS	Actis Pine Labs Investment Holdings Limited	SELL	9828	154.3
PRESSTONIC	Atul Kumar Srivastava	SELL	101	29.4
PROTEAN	Ishares Cybersecurity And Tech Etf	SELL	382	607.2
RATNAVEER	Arihant Capital Markets Limited	BUY	343	192.0
RATNAVEER	Arihant Capital Markets Limited	SELL	347	191.2
RATNAVEER	L7 Hitech Private Limited	BUY	4	188.1
RATNAVEER	L7 Hitech Private Limited	SELL	350	187.9
RBA	Hrti Private Limited	SELL	2753	73.6
RBA	Hrti Private Limited	BUY	6823	72.9
RBA	Qe Securities Llp	SELL	3681	73.8
RBA	Qe Securities Llp	BUY	3743	74.1

RBA	Rajasthan Global Securities Pvt Ltd	BUY	2218	72.3
RBA	Rajasthan Global Securities Pvt Ltd	SELL	3601	72.3
RELTD-RE	M7 Global Fund Pcc - Aerion	BUY	900	36.4
RELTD-RE	M7 Global Fund Pcc - Cell Dewcap Fund	BUY	900	36.4
RELTD-RE	Nova Global Opportunities Fund Pcc - Touchstone	BUY	900	36.4
RELTD-RE	Radiant Computech Private Limited	SELL	2788	36.4
RITCO	A And S Tradelink	BUY	110	273.6
RITCO	A And S Tradelink	SELL	150	275.1
RITCO	Setu Securities Pvt Ltd	BUY	300	275.0
RML	Nk Securities Research Private Limited	SELL	139	1,111.6
RML	Nk Securities Research Private Limited	BUY	139	1,110.6
SANGINITA	Guttikonda Rajasekhar	BUY	268	38.4
SBC	Arpna Capital Services Private Limited	BUY	1000	44.2
SBC	Arpna Capital Services Private Limited	SELL	2500	42.0
SBC	Greenbucks Securities (P) Ltd	BUY	4243	42.7
SBC	Greenbucks Securities (P) Ltd	SELL	4243	43.0
SBC	Hrti Private Limited	SELL	3882	42.9
SBC	Hrti Private Limited	BUY	5311	42.6
SBC	Qe Securities Llp	BUY	3296	43.1
SBC	Qe Securities Llp	SELL	3472	43.2
SEITINVIT	Askwa Income Opportunities Aif	BUY	2050	123.0
SEITINVIT	Larsen & Toubro Limited	SELL	2050	123.0
SHAH-RE1	Anupam Dhar	BUY	1420	0.1
SHAH-RE1	Bansidhara Dalai	BUY	609	0.1
SHAH-RE1	Chetan Kanji Faria	BUY	800	0.1
SHAH-RE1	Chirag Jaysukhlal Doshi	SELL	575	0.1
SHAH-RE1	Dhanjit Real Trade Llp	SELL	2030	0.1
SHAH-RE1	Jayani Healthcare	SELL	579	0.1
SHAH-RE1	Nagina Jain	BUY	851	0.1
SHAH-RE1	Sellwin Traders Limited	SELL	1030	0.1
SHAH-RE1	Suthar Chandrikaben Chinulal	SELL	633	0.1
SIMPLEXINF	Pragya Mercantile Pvt Ltd	SELL	800	280.0
TARIL	Microcurves Trading Private Limited	BUY	2109	361.3
TARIL	Microcurves Trading Private Limited	SELL	2109	361.5
TARIL	Qe Securities Llp	BUY	1763	358.1
TARIL	Qe Securities Llp	SELL	1821	356.3
TEJASNET	Junomoneta Finsol Private Limited	SELL	961	627.3
TEJASNET	Junomoneta Finsol Private Limited	BUY	961	627.2
WALCHANNAG	Hrti Private Limited	SELL	339	308.2
WALCHANNAG	Hrti Private Limited	BUY	371	310.2

Block Deals

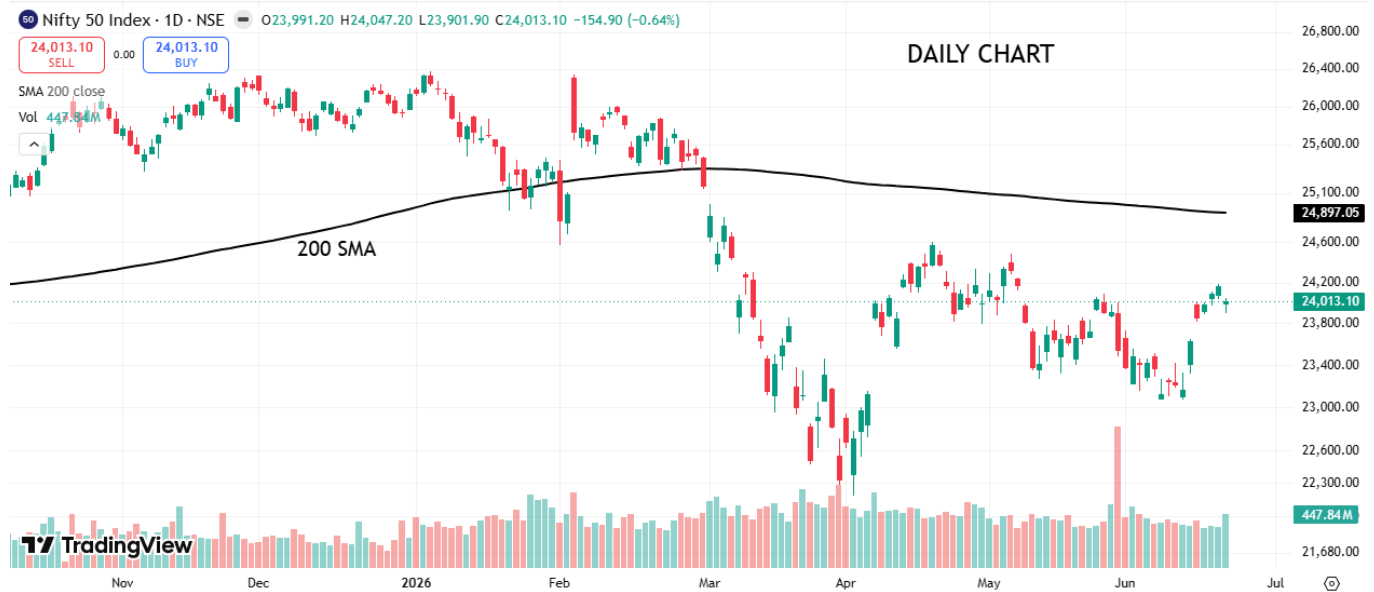
Security Name	Client Name	Buy / Sell	Qty (in 000)	Price
	No Deals			

Event Calendar – Corporate Action (Financial Results/ Dividend/other business matters)

Company	Purpose
Likhitha Infrastructure Limited	Fund Raising
Ujaas Energy Limited	Other business matters

Nifty Spot – Pivot Levels 22/06/2026

	Closing	Support			Resistance		
		1	2	3	1	2	3
Nifty	24013.10	23927	23841	23781	24073	24133	24219



Previous week it was mentioned that, **Our view is Buy on Dips & below 23070 traders should use 23487–(22600– 21715) levels as an opportunity to buy. If the trend is strong Nifty will bounce back from 22600 levels, any close below should be treated as negative for the current uptrend. Currently, (23845–24320)–24710–(25090–25645) as sell areas. If sustain above 25645 we open for 26347 and later further to 26500–26700 area.**

Forming Up Gaps, Nifty crossed above 23845 (1st sell area) and extended its rally to mark a high of 24189.25, while marking a low of 23817.80. Thereafter, selling pressure emerged at higher levels, leading to a corrective move. The index subsequently formed Down Gaps and declined to mark a low of 23901.90. Overall, the price action suggests that while the trend remains positive, resistance at higher levels is capping the upside, leading to a phase of correction and consolidation. Now, Nifty closed at 24013.10.

Below 23817 (current week low), we have support levels at 23487–(22600– 21715) as bounce back levels. If the trend is strong Nifty will bounce back from 22600 levels, any close below should be treated as negative for the current uptrend. As of now, (24410–24780)–25080–(25380–25810) as sell level areas. If sustain above 25810 we open for 26347 and later further to 26500–26700 area.

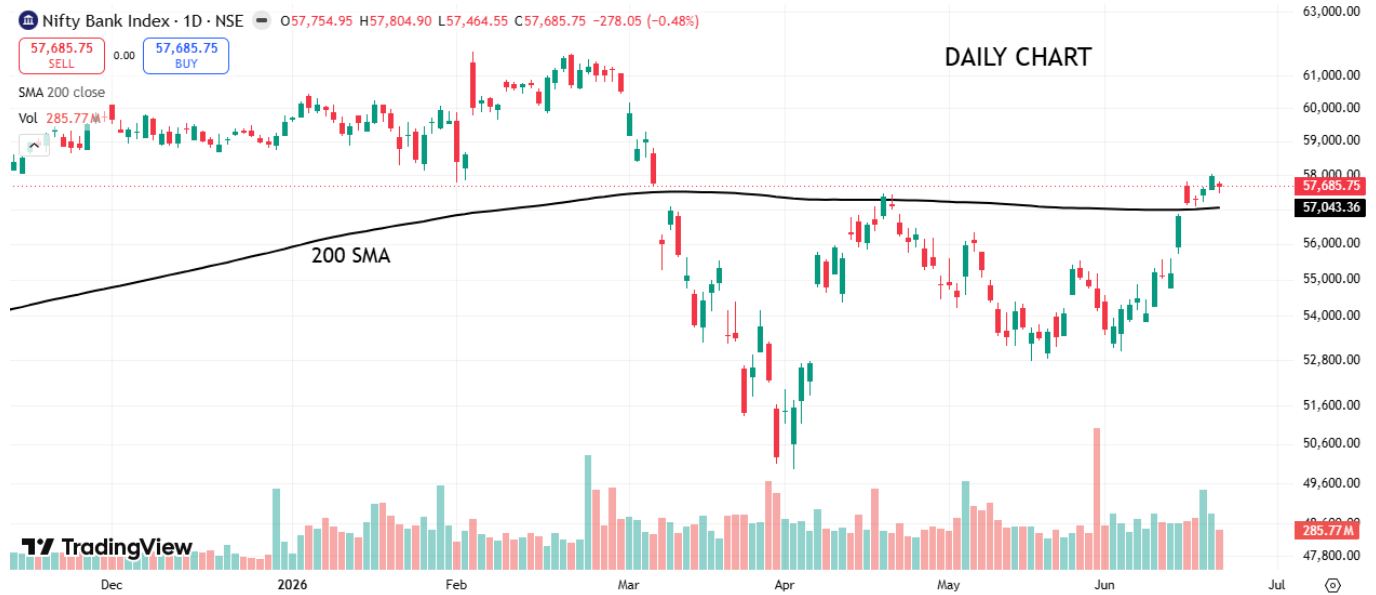
Our view is Buy on Dips & below 23817 traders should use 23487–(22600– 21715) levels as an opportunity to buy. If the trend is strong Nifty will bounce back from 22600 levels, any close below should be treated as negative for the current uptrend. Currently, (24410–24780)–25080–(25380–25810) as sell areas. If sustain above 25810 we open for 26347 and later further to 26500–26700 area.

The 200 SMA is at 24897.05.

All the calls/opinions are subject to Disclosures and Disclaimer <http://goo.gl/8bCMYq>

Bank Nifty Spot – Pivot Levels 22/06/2026

	Closing	Support			Resistance		
		1	2	3	1	2	3
Bank Nifty	57685.75	57498	57311	57158	57838	57991	58178



Previous week it was mentioned, **Our view is Buy on Dips & below 53843 traders should use (55780-53930)-(52072-49430) levels as an opportunity to buy. If the trend is strong Bank Nifty will bounce back from 52072 levels, any close below should be treated as negative for the current uptrend. Currently, (55088-56370)-57400-(58430-59900) as sell level areas. If sustain above 59900 we open for 61765 and later further to (62540-63470) area.**

Forming Up Gaps, Bank Nifty opened at 57679.65 & later, declined to mark a low of 57076.25, taking support near the 200 SMA. Thereafter, the index witnessed a recovery and rallied to mark a high of 58021.25, followed by a minor correction reaching a low of 57464.55. Now, Bank Nifty closed at 57685.75.

Below 57076 (current week low), we have support levels at (55780-53920)-(52072-49430) as bounce back levels. If the trend is strong Bank Nifty will bounce back from 53920 levels, any close below should be treated as negative for the current uptrend.

As of now, (58180-58870)-59420-(59980-60760) as sell level areas.

If sustain above 60760 we open for 61765 and later further to (62540-63470) area.

Our view is Buy on Dips & below 57076 traders should use (55780-53930)- (52072-49430) levels as an opportunity to buy. If the trend is strong Bank Nifty will bounce back from 53920 levels, any close below should be treated as negative for the current uptrend. Currently, (58180-58870)-59420-(59980-60760) as sell level areas. If sustain above 60760 we open for 61765 and later further to (62540-63470) area.

The 200 SMA is at 57043.36.

All the calls/opinions are subject to Disclosures and Disclaimer <http://goo.gl/8bCMYQ>

Gujarat Fluorochemicals Ltd – Technical Stock Call – 22/06/2026

Technical Stock Call	Action	Reco	Target	Support	SL
FLUOROCHEM	BUY	3890	5200	(3752-3643)-3566-(3490-3385)	3240



View – Medium Term Bullish

The stock commenced its downtrend from 4880.95 (OCT 24).

Stock started trading below the averages & breached 200 SMA, further forming lower lows the stock extended the decline marking a low of 2916.60 (JAN 26).

During the correction phase, the stock traded into a consolidation zone during the period JAN 25_JUN 26, around the averages seeking trend direction.

Buying emerged & the stock commenced its up move & gradually reached a high of 3878 (MAY 26), but faced resistance in that area & witnessed a minor correction.

Recently in JUN 2026, after forming higher bottoms at 3451.20 & taking support on 200 SMA, the stock has given a **Descending Channel Breakout** supported by volume with a Bullish candle reaching to a high of 3920.50, which is higher than the previous swing highs.

Aroon, KST & MACD indicators suggest Positive crossover.

Target of **5200** is expected with lower support levels at **(3752-3643)-3566-(3490-3385)** in case of intermediate fall.

A stop loss at **3240** is to be followed for the trade.

All the calls/opinions are subject to Disclosures and Disclaimer <http://goo.gl/8bCMYQ>

Nitco Limited – Technical Stock Call – 22/06/2026

Technical Stock Call	Action	Reco	Target	Support	SL
Nitco Limited	BUY	113.75	200	(105-99)-95-(90-88)	80



TradingView

Primary move in stock commenced from 18 (Oct 2023). Trading above averages, Uptrend continued, and the stock reached a high of 149 (JAN 2025).

The stock took support of the averages and bounced back reaching a high of 164, (June 2025).

Lower tops were formed & Profit booking followed. The stock gave a valid correction making a low of **64 (MARCH 2026) but** bounced back taking support of 200 SMA.

Recently after forming higher bottoms the stock has given a Symmetrical Triangle Breakout supported by volumes reaching a high of **114.5 which is above previous swing High**.

KST, MACD & Aroon UP Down indicators suggest Positive uptrend. Probability of Further Up Move is very high.

Target of **200** is expected with lower support levels **(105-99)-95-(90-88)** in case of intermediate fall.

A stop loss at **80** is to be followed for the trade. All the calls/opinions are subject to Disclosures and Disclaimer <http://goo.gl/8bCMYQ>

Global Macro Events (22 nd June 2026)		
Event	Previous	Forecasted
India		
Infrastructure Output YoY MAY	0.017	0.019
USA		
Fed Waller Speech		
3-Month Bill Auction	0.0364	
6-Month Bill Auction	0.0368	
China		
Loan Prime Rate 1Y	0.03	0.03
Loan Prime Rate 5Y JUN	0.035	0.035
Great Britain		
Germany		

##STOCK SPECIFIC NEWS

Dr. Reddy's Laboratories Limited The multinational pharmaceutical giant accelerated its international formulations commercialization drive by launching Bosutinib tablets 400 mg in the United States market. The asset represents a generic therapeutic equivalent of Bosulif, which achieved verified US market sales of approximately \$253.8 million for the trailing 12-month cycle ended April 2026. Specialized healthcare desks indicate that this launch provides the company with high-margin oncology revenue pipelines that will directly expand cash flow generation. The equity maintains a bullish chart setup, holding comfortably above its 100-day simple moving average. [The Economic Times](#)

Adani Green Energy Limited The renewable utility flagship finalized infrastructure blueprints to commission a massive 14 gigawatt-hour battery energy storage system at its Khavda renewable energy park in Gujarat by the end of the current fiscal year. The strategic deployment aims to minimize clean energy curtailment and stabilize transmission grids within the domestic power system. Energy research models indicate that this specialized storage capacity will elevate overall plant load factors and secure long-term power purchase agreement realizations. Institutional delivery volumes indicate a steady accumulation phase across major quant desks. [The Economic Times](#)

Krishna Institute of Medical Sciences Limited The specialized healthcare provider's board officially validated a substantial fundraising initiative via the preferential allotment of 7,702,182 warrants on a private placement basis. The warrants are priced structurally at ₹779 per unit, with the execution window spanning over an 18-month regulatory timeline from the formal date of allotment. Corporate capital planners note that the net cash intake will finance regional hospital capacity additions and greenfield expansion layouts across southern medical hubs. The stock reflects a positive technical structure, bouncing from its short-term exponential moving averages. [The Economic Times](#)

JSW Energy Limited The power generation producer entered into a definitive corporate acquisition agreement with Kolahai Infotech and SFI Parcel Services to purchase a 100% equity stake in Maruti Clean Coal and Power. The transaction transfers absolute ownership of an operational 300 MW thermal power project located in Chhattisgarh, subject to final regulatory clearings. Energy analysts project an immediate expansion in base-load generation capacity and a stronger revenue-earning profile over the coming quarters. The counter exhibits strong technical momentum, trending within an established ascending channel. [The Economic Times](#)

NLC India Limited The state-owned mining and energy enterprise secured a vital growth pipeline after being declared the preferred bidder for critical and strategic mineral blocks in Telangana. The allocation was finalized through competitive mineral block auctions managed by the Ministry of Mines. Resource research desks indicate that the secure access to strategic minerals will significantly de-risk raw material sourcing for the company's long-term power generation and industrial processing facilities. Technical configurations show a decisive volume breakout, pushing the stock past its intermediate resistance zones. [The Economic Times](#)

Nestle India Limited The consumer goods specialist issued a categorical operational update clarifying that recent social media narratives regarding product infestations were unverified and factually incorrect. The company confirmed that internal and external laboratory quality assurance tests have fully validated compliance with statutory food safety benchmarks. Supply chain trackers indicate that consumer off-take profiles across primary retail and distribution lines remain completely unaffected by the digital noise. The counter continues to operate as a classic defensive holding, maintaining a stable position near its multi-week price baseline. [The Economic Times](#)

Berger Paints India Limited The specialty coatings manufacturer generated substantial market attention as tracking desks reported sharp near-term volume expansions of 9.04% to close at ₹550.70. Financial modeling parameters suggest that lower crude derivative monomer feedstocks are beginning to ease input pressures and support a gross margin expansion. Quantitative researchers highlight that the stock's recent price action

confirms a bullish moving average crossover setup on heavy daily delivery volumes. Technical support zones are now firmly established at ₹525.00 against any near-term profit booking waves. [The Economic Times](#)
The Economic Times - Indiatimes

PTC Industries Limited The advanced engineering and defense component manufacturer registered high-conviction buying inflows, expanding by 5.25% to reach an absolute level of ₹18,333.00. Aerospace procurement trackers note that the company's specialized titanium casting capabilities have positioned it to capture high-value multi-year export pipelines. Investment desks are modeling sustained revenue expansions due to high entry barriers and proprietary tooling approvals. The stock maintains an exceptional structural profile, keeping comfortably above its short-term exponential moving averages. [The Economic Times](#)
The Economic Times - Indiatimes

New India Assurance Company Limited The premier public sector general insurance underwriter attracted aggressive institutional volume, surging by 13.24% to settle at ₹202.31 on a massive trading volume of 119,622k shares. Insurance research counters highlight that stabilizing claim settlement ratios combined with rising multi-tier premium pricing have dramatically enhanced net underwriting profitability metrics. Delivery analytics indicate that domestic mutual funds are actively scaling up long-term weightings in the company. The price action reflects a structural breakout from a multi-month sideways consolidation range. [The Economic Times](#)
The Economic Times - Indiatimes

Transformers & Rectifiers (India) Limited The industrial electrical equipment manufacturer witnessed sharp risk-on accumulation, locking in a 10.07% price appreciation to close at ₹357.55 with an elevated trading volume of 41,817k shares. Infrastructure trackers emphasize that the current pan-India power grid modernization and green energy grid integrations have filled the company's transformer order books to maximum operating limits. Financial analysts expect a substantial multi-year revenue expansion driven by stable pricing structures. Technical indicators show the stock's relative strength index shifting into an aggressive bullish zone. [The Economic Times](#)
The Economic Times - Indiatimes

Schloss Bangalore Limited The luxury hospitality asset operator drew significant buying interest, expanding by 8.00% to close the weekend session at ₹494.20. Leisure sector research desks indicate that rising average room rates combined with stable corporate occupancy percentages across premium metropolitan hubs continue to boost revenue per available room metrics. Portfolio desks note that asset managers are executing selective capital rotation into high-margin premium hospitality plays. The stock shows a bullish candle configuration with major support established at ₹465.00. [The Economic Times](#)
The Economic Times - Indiatimes

Caplin Point Laboratories Limited The specialized formulations developer achieved high-conviction purchasing momentum, gaining 6.11% to end at ₹2,503.50. Latin American and specialized export channel monitoring highlights that the company's niche market positioning shields its revenue lines from broader international pricing pressures. Financial desks model strong operating cash flows supported by fully integrated active pharmaceutical ingredient manufacturing plants. The daily price chart reveals a structural breakout past its historical resistance levels on expanded turnover. [The Economic Times](#)
The Economic Times - Indiatimes

Bharti Hexacom Limited The regional telecommunications provider advanced by 3.95% to settle at ₹1,494.50 amid sustained institutional accumulation. Telecom research desks indicate that incremental average revenue per user expansions, supported by premium data upgrades, are driving higher operating margins. Derivative data points to substantial short-covering across immediate out-of-the-money call options. The technical framework reveals the formation of a higher-top, higher-bottom sequence, indicating an ongoing structural uptrend over medium-term horizons. [The Economic Times](#)

The Economic Times - Indiatimes

SECTION 2: CORPORATE ANNOUNCEMENTS

Brooks Laboratories Limited / Partial Stake Sale Resolution The board of directors formally approved the definitive execution parameters for the partial sale of its equity shareholding in Brooks Steriscience Limited. The operational transaction involves the transfer of 51,220 equity shares at a cash consideration of ₹20,760 per share, yielding an aggregate total value of ₹106,33,27,200. Following the completion of this asset transfer, the company's residual holding will stand optimized at 32.67% of the total paid-up share capital. [Official Filing](#)

Magellanic Cloud Limited / Exchange Surveillance Response The compliance department submitted a comprehensive regulatory clarification to the stock exchanges addressing recent significant upward volume shifts across its equity counters. The company officially stated that all price-sensitive developments remain fully disseminated in the public domain and no undisclosed data parameters exist under Regulation 30. Management confirmed that the recent market activity remains entirely organic and driven by public market forces. [Official Filing](#)

Utkarsh Small Finance Bank Limited / Directorate Framework Amendments The bank's secretarial office finalized and released the formal corporate outcomes of its scheduled board meeting. The approved documentation establishes a series of structural changes within the bank's directorate and updates the composition of key internal governance frameworks to ensure strict compliance with modern banking regulations. [Official Filing](#)

Larsen & Toubro Limited / Step-Down Subsidiary Incorporation The infrastructure developer filed a formal statutory disclosure under SEBI Listing Obligations and Disclosure Requirements outlining the creation of a new corporate entity. The document establishes the complete setup of a wholly-owned step-down subsidiary designed to execute niche technology engineering operations under the parent group's centralized financial umbrella. [Official Filing](#)

BSE - Corporates

SECTION 3: MACRO / NON-STOCK NEWS

Indian Equity Markets / Institutional Profit Booking and Index Re-Balancing The domestic equity indices snapped a five-session winning streak as institutional profit-taking pushed frontline gauges into negative territory. The Nifty 50 compressed by 0.64% to settle at 24,013.10, while the BSE Sensex shed 607.08 points to close the session at 76,802.90. Derivative analytics indicate a massive build-up of short positions across front-month index call option options as open interest parameters shifted lower. Macro traders point out that the broader consolidation was exacerbated by a 3.65% plunge in rate-sensitive midcap gauges, forcing retail desks to adopt defensive allocations. [The Economic Times](#)

The Economic Times - Indiatimes

Global Monetary Policy Trends / Central Bank Transition into Extended Pause Phase Global investment banking research teams highlight a fundamental macroeconomic shift as major central banks transition from a synchronized monetary easing cycle to an extended pause at elevated policy levels. Financial models show that approximately 70% of developed market central banks have halted their rate-cutting trajectories due to sticky structural inflation. Macroeconomists project that this higher-for-longer global interest rate environment will compress cross-border capital flows into emerging markets. Bond desks are advising corporate treasuries to lock in domestic yields ahead of potential cross-currency volatility expansions. [J.P. Morgan Global Research](#)
J.P. Morgan

Global Growth Forecasts / Upward Revisions Driven by Fiscal Expansion and AI Capital Expenditures The International Monetary Fund's revised World Economic Outlook has adjusted global growth projections upward to 3.3% for the current fiscal period. The macroeconomic acceleration is largely driven by aggressive front-loading of industrial production ahead of scheduled global tariff changes, improved liquidity conditions, and massive technology-driven capital expenditure allocations into artificial intelligence infrastructure. However,

international trade experts warn that downside risks remain elevated due to intensifying trade polarization and potential technology asset overvaluations. Emerging market strategists note that localized manufacturing export corridors are structurally positioned to absorb these global supply chain realignments. [International Monetary Fund](#)

National Stock Exchange / Technical Infrastructure Testing and Auction Upgrades The National Stock Exchange of India successfully executed a comprehensive weekend mock trading session across its equity cash and derivative segments to test new structural trading modalities. The administrative exercise focused specifically on the operational integration of the newly introduced Closing Auction Session in the equity cash segment. Exchange clearing operations reported normal settlement parameters, confirming that the digital architecture can support large-scale institutional volume spikes without latency delays. Quantitative desks indicate that the structural upgrade will significantly improve end-of-day price discovery processes for index-weighted equities. [NSE India Circulars](#)

NSE

Domestic Banking Trends / Credit Distribution Metrics and Provisioning Buffers Credit tracking desks report that despite intense deposit competition across the banking sector, domestic commercial lenders are maintaining robust loan growth trajectories driven by urban consumption and public infrastructure spending. Financial analysts note that the systemic net interest margins are stabilizing as asset liability committees successfully optimize wholesale borrowing weights. Derivative position tracking across the Nifty Bank index, which settled lower at 57,685.75, reveals aggressive put options writing at major psychological support lines, suggesting that institutional players expect strong structural floors to hold. [The Economic Times](#) | [NSE India Circulars](#)

Disclosures and Disclaimer

Ventura Securities Limited (VSL) is a SEBI registered intermediary offering broking, depository and portfolio management services to clients. VSL is member of BSE, NSE and MCX-SX. VSL is a depository participant of NSDL. VSL states that no disciplinary action whatsoever has been taken by SEBI against it in last five years except administrative warning issued in connection with technical and venial lapses observed while inspection of books of accounts and records. Ventura Commodities Limited, Ventura Guaranty Limited, Ventura Insurance Brokers Limited and Ventura Allied Services Private Limited are associates of VSL. Research Analyst (RA) involved in the preparation of this research report and VSL disclose that neither RA nor VSL nor its associates (i) have any financial interest in the company which is the subject matter of this research report (ii) holds ownership of one percent or more in the securities of subject company (iii) have any material conflict of interest at the time of publication of this research report (iv) have received any compensation from the subject company in the past twelve months (v) have managed or co-managed public offering of securities for the subject company in past twelve months (vi) have received any compensation for investment banking merchant banking or brokerage services from the subject company in the past twelve months (vii) have received any compensation for product or services from the subject company in the past twelve months (viii) have received any compensation or other benefits from the subject company or third party in connection with the research report. RA involved in the preparation of this research report discloses that he / she has not served as an officer, director or employee of the subject company. RA involved in the preparation of this research report and VSL discloses that they have not been engaged in the market making activity for the subject company. Our sales people, dealers, traders and other professionals may provide oral or written market commentary or trading strategies to our clients that reflect opinions that are contrary to the opinions expressed herein. We may have earlier issued or may issue in future reports on the companies covered herein with recommendations/ information inconsistent or different those made in this report. In reviewing this document, you should be aware that any or all of the foregoing, among other things, may give rise to or potential conflicts of interest. We may rely on information barriers, such as "Chinese Walls" to control the flow of information contained in one or more areas within us, or other areas, units, groups or affiliates of VSL. This report is for information purposes only and this document/material should not be construed as an offer to sell or the solicitation of an offer to buy, purchase or subscribe to any securities, and neither this document nor anything contained herein shall form the basis of or be relied upon in connection with any contract or commitment whatsoever. This document does not solicit any action based on the material contained herein. It is for the general information of the clients / prospective clients of VSL. VSL will not treat recipients as clients by virtue of their receiving this report. It does not constitute a personal recommendation or take into account the particular investment objectives, financial situations, or needs of clients / prospective clients. Similarly, this document does not have regard to the specific investment objectives, financial situation/circumstances, and the particular needs of any specific person who may receive this document. The securities discussed in this report may not be suitable for all investors. The appropriateness of a particular investment or strategy will depend on an investor's individual circumstances and objectives. Persons who may receive this document should consider and independently evaluate whether it is suitable for his/ her/their particular circumstances and, if necessary, seek professional/financial advice. And such person shall be responsible for conducting his/her/their own investigation and analysis of the information contained or referred to in this document and of evaluating the merits and risks involved in the securities forming the subject matter of this document. The projections and forecasts described in this report were based upon a number of estimates and assumptions and are inherently subject to significant uncertainties and contingencies. Projections and forecasts are necessarily speculative in nature, and it can be expected that one or more of the estimates on which the projections and forecasts were based will not materialize or will vary significantly from actual results, and such variances will likely increase over time. All projections and forecasts described in this report have been prepared solely by the authors of this report independently of the Company. These projections and forecasts were not prepared with a view toward compliance with published guidelines or generally accepted accounting principles. No independent accountants have expressed an opinion or any other form of assurance on these projections or forecasts. You should not regard the inclusion of the projections and forecasts described herein as a representation or warranty by VSL, its associates, the authors of this report or any other person that these projections or forecasts or their underlying assumptions will be achieved. For these reasons, you should only consider the projections and forecasts described in this report after carefully evaluating all of the information in this report, including the assumptions underlying such projections and forecasts. The price and value of the investments referred to in this document/material and the income from them may go down as well as up, and investors may realize losses on any investments. Past performance is not a guide for future performance. Future returns are not guaranteed and a loss of original capital may occur. Actual results may differ materially from those set forth in projections. Forward-looking statements are not predictions and may be subject to change without notice. We do not provide tax advice to our clients, and all investors are strongly advised to consult regarding any potential investment. VSL, the RA involved in the preparation of this research report and its associates accept no liabilities for any loss or damage of any kind arising out of the use of this report. This report/document has been prepared by VSL, based upon information available to the public and sources, believed to be reliable. No representation or warranty, express or implied is made that it is accurate or complete. VSL has reviewed the report and, in so far as it includes current or historical information, it is believed to be reliable, although its accuracy and completeness cannot be guaranteed. The opinions expressed in this document/material are subject to change without notice and have no obligation to tell you when opinions or information in this report change. This report or recommendations or information contained herein do/does not constitute or purport to constitute investment advice in publicly accessible media and should not be reproduced, transmitted or published by the recipient. The report is for the use and consumption of the recipient only. This publication may not be distributed to the public used by the public media without the express written consent of VSL. This report or any portion hereof may not be printed, sold or distributed without the written consent of VSL. This document does not constitute an offer or invitation to subscribe for or purchase or deal in any securities and neither this document nor anything contained herein shall form the basis of any contract or commitment whatsoever. This document is strictly confidential and is being furnished to you solely for your information, may not be distributed to the press or other media and may not be reproduced or redistributed to any other person. The opinions and projections expressed herein are entirely those of the author and are given as part of the normal research activity of VSL and are given as of this date and are subject to change without notice. Any opinion estimate or projection herein constitutes a view as of the date of this report and there can be no assurance that future results or events will be consistent with any such opinions, estimate or projection. This document has not been prepared by or in conjunction with or on behalf of or at the instigation of, or by arrangement with the company or any of its directors or any other person. Information in this document must not be relied upon as having been authorized or approved by the company or its directors or any other person. Any opinions and projections contained herein are entirely those of the authors. None of the company or its directors or any other person accepts any liability whatsoever for any loss arising from any use of this document or its contents or otherwise arising in connection therewith. The information contained herein is not intended for publication or distribution or circulation in any manner whatsoever and any unauthorized reading, dissemination, distribution or copying of this communication is prohibited unless otherwise expressly authorized. Please ensure that you have read "Risk Disclosure Document for Capital Market and Derivatives Segments" as prescribed by Securities and Exchange Board of India before investing in Securities Market.

Ventura Securities Limited - SEBI Registration No.: INH000001634

Corporate Office: I-Think Techno Campus, 8th Floor, 'B' Wing, Off Pokhran Road No 2, Eastern Express Highway, Thane (W) – 400608

22nd June 2026